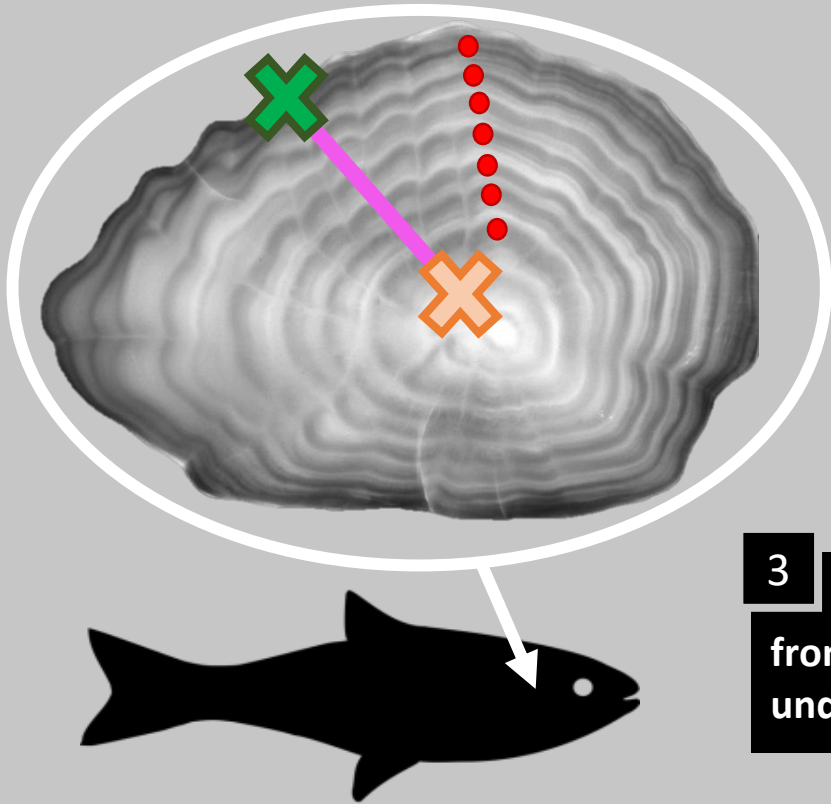


Analysing population structure and connectivity through otolith chemistry of Stout whiting (*Sillago robusta*)

Sarakinis *et al.* 2019

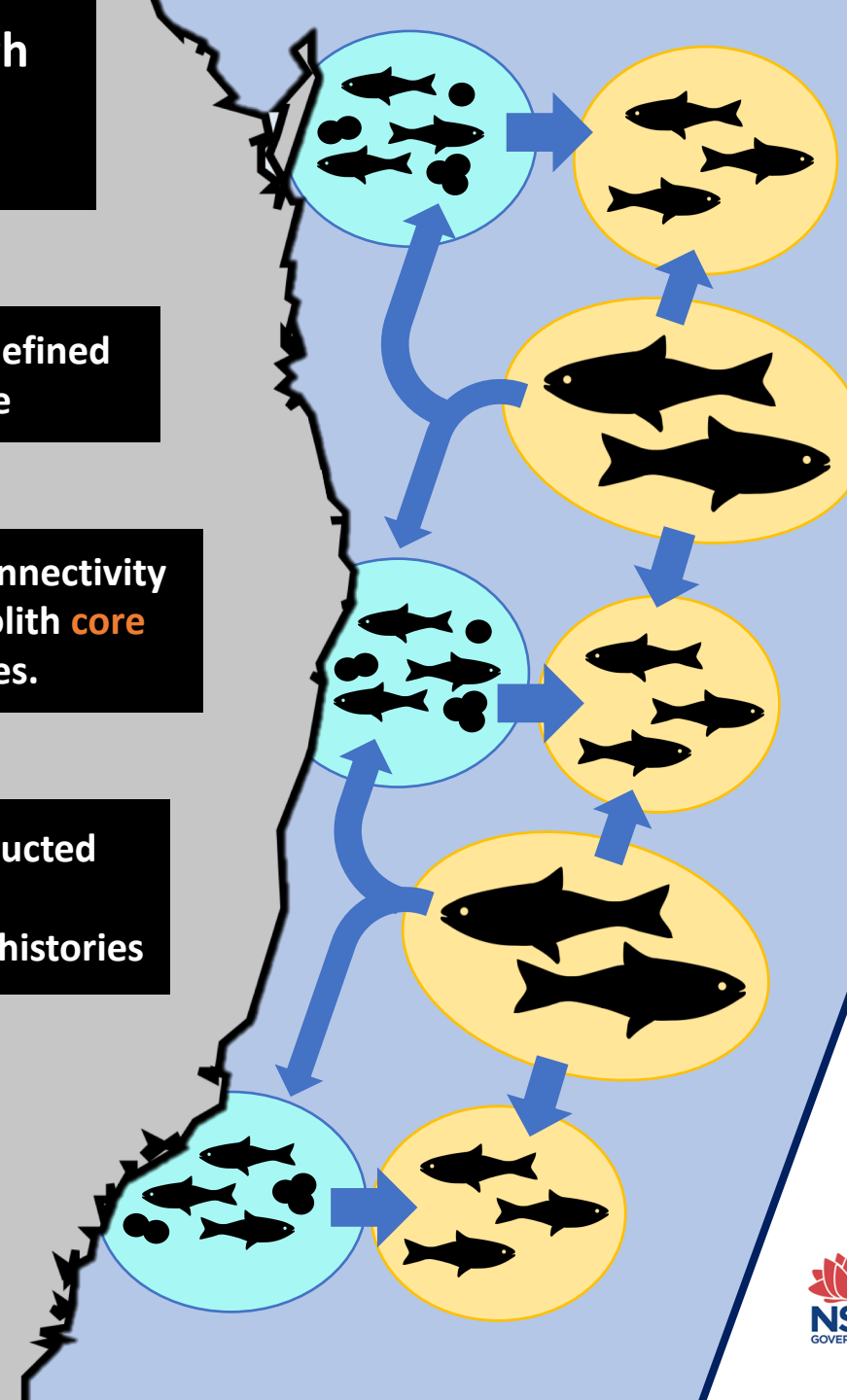


1 Aging otoliths defined population structure

2 Population connectivity analysed using otolith core and edge signatures.

3 Otolith profiles constructed from transect analysis to understand individual life histories

Heterogeneous zones with variability in life histories indicate connectivity among populations. Limited juvenile habitats potentially located inshore suggests implementation of revised management/conservation strategies for these source populations.



East-Australian *S. robusta* potentially form an interconnected meta-population



THE UNIVERSITY of ADELAIDE



Department of Primary Industries